



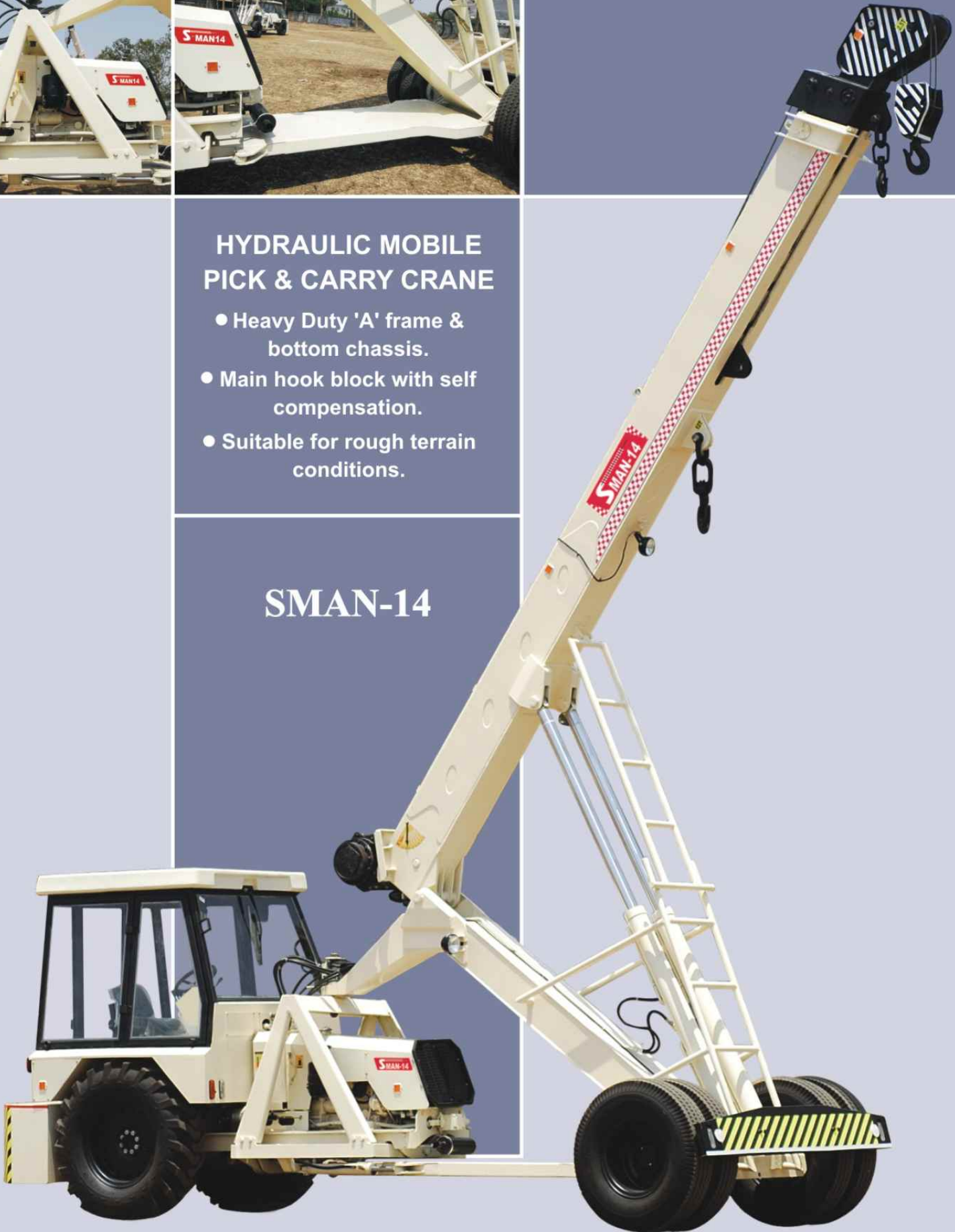
The Ultimate Lifting Solution



HYDRAULIC MOBILE PICK & CARRY CRANE

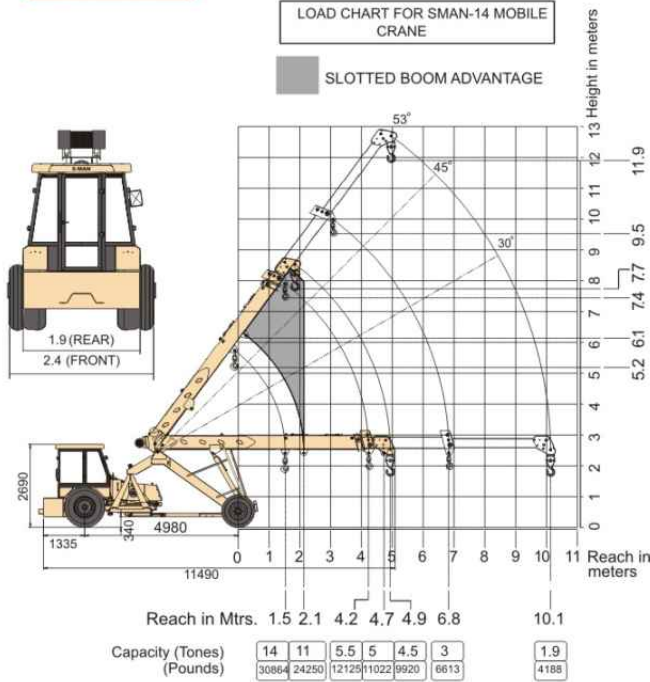
- Heavy Duty 'A' frame & bottom chassis.
- Main hook block with self compensation.
- Suitable for rough terrain conditions.

SMAN-14





LOAD CHART FOR SMAN-14 MOBILE CRANE



Technical Data Model SMAN-14

Lifting capacity

14 tonnes.

Engine

Simpson S 433(I) F1 bharat stage - II, 4 cylinders, water cooled, diesel engine.

Rated Power

Engine Rated power 49 BHP @ 2200 rpm. (Max. continuous engine rating 59 BHP @ 2300 rpm.)

Transmission

Sliding mesh with 6 forward and 2 reverse speeds and high low range selector.

Top speed

28 KMPH without load.

Clutch

Mechanical operated dry friction single clutch plate.

Brakes

Service : Pneumatically assisted hydraulic operated front and rear brakes.

Parking :Mechanically operated by linkage on rear wheels.

Steering

Hydrostatic steering wheel with 49 ° articulation on both sides and maximum 6.9 mtrs turning radius on outer rear wheels and minimum 5 mtrs radius on inner rear wheels.

Hydraulic system

- Main pump vane type.
- Four spool control valve.
- Two double acting hydraulic cylinders for main boom.
- Two double acting hydraulic cylinders for steering.
- One double acting hydraulic cylinder for extension of boom.
- High Torque Radial Piston motor for winch.

Telescopic boom

Three part box type hydraulically operated boom with total extension of 5400 mm.

Boom Derricking

- 0° to 53° time 20 seconds.
- 53° to 0° time 22 seconds.

Telescopic time

- Extension : 14 seconds.
- Retention : 11 seconds.

Hoist

Speed : 55 mtrs/ min (line speed).

Wire Rope : Steel core with self compensating main hook

Electrical System

12V. Negative earth battery with 35 amp. alternator

Tyres

- Front : 11.00 x 20 16 PR(4nos.)
- Rear : 13.00 x 24 12 PR(2 nos.)

Fluid Capacities

- Air cleaner : 0.75 Ltrs.
- Engine : 8 Ltrs.
- Fuel tank : 45Ltrs.
- Hydraulic tank : 120 ltrs.
- Transmission : 38Ltrs.
- Brakes : 0.75 Ltrs.

Safety

- Hose burst / tilt lock safety valve on main boom.
- Buzzer system on over hoisting and full extension
- Fabricated safety guard for cylinders.
- Fire extinguisher, laminated front wind shield.
- Rear work lamps.
- Hazard indication switch.
- Safety Seat Belt for driver.

Features

- All plates in bottom chassis are in single piece.
- Clear visibility for operator due to spacious cabin.
- Mechanical Boom Degree indicator
- Mechanical Inclinometer
- Fully digital instrument cluster

Optional Accessories

Hydrostatic steering / AC cabin / Fly Jib / Sling Box

Standard Equipments

Reflectors, front & rear work lights, fully enclosed wide view cabin, front crash guard, tool kit, FM Radio and Cabin Fan.

Guages

Water temperature, engine oil pressure, brake air pressure ampere meter, rpm meter cum hour recorder.

Weight

S-MAN 14
Unladen Weight 11100 kg.



HEAD OFFICE & WORKS :

SHAKTI MINING EQUIPMENTS PVT. LTD.

W-140 to 143 (A), MIDC Industrial Area, Ambad, Nashik-422 010, Maharashtra, India.

PH:+91-253-2381041, 2382940 Fax : +91-253-2381040.

E-mail: sales@shaktimining.com Website: www.shaktimining.com

Dealer :

MKT - CTG - 005

Dimensions, Weights and Capacities mentioned herein are approximate. Accessories shown are not a part of standard equipment. Shakti Mining Equipments Pvt. Ltd. reserves the rights to modify or change the designs & specifications of SMAN cranes.